



Devil's Gulch

100-mile and 50-mile Endurance Run
2026 Runner's Manual





Table of Contents

| | |
|---|-----------|
| History..... | 3 |
| Course Description & Stats..... | 3 |
| Course Maps..... | 5 |
| Elevation Profiles..... | 6 |
| 50-mile | 6 |
| 100-mile | 6 |
| Aid Stations | 6 |
| Aid Station Overview Tables | 7 |
| 50-mile..... | 7 |
| 100-mile..... | 8 |
| Aid Station Driving Directions | 9 |
| First Aid..... | 9 |
| Drop Bags..... | 10 |
| Drop Bag Locations/Mileages..... | 10 |
| Cutoff Times and Policy | 10 |
| Crew and Pacer Information..... | 11 |
| Crew | 11 |
| Pacers | 12 |
| Pacer Rules..... | 12 |
| Tips/Tricks for a Successful Run..... | 12 |
| Required Gear..... | 13 |
| Race Policies and Disqualifications | 13 |
| Swag!..... | 14 |
| Awards..... | 14 |
| Accommodations | 14 |
| Schedule | 15 |
| Friday, July 10 th | 15 |
| Mandatory Pre-Race Meeting: 50 and 100-mile runners | 15 |
| Packet Pickup (Half Marathon Only!) | 15 |
| Saturday, July 11 th | 15 |
| Race Schedule | 15 |
| Sunday July 12 th | 15 |



History

The idea of this race was started by Jessie McClurg from Banshee Running. Evergreen was honored to build on the framework of this idea and grow the race into an incredibly challenging, unique event in the Eastern Cascades.

While this race is still young, we hope to foster its growth into one of the premier endurance runs of the Pacific Northwest. With technical trails and a whole heck of a lot of elevation, it's not for the faint of heart. However, we hope to soften some of the challenges of the endurance run with our friendly Evergreen Trails staff, well-stocked aid stations, and detailed course marking.

Course Description & Stats

We are thankful to be hosted by Mission Ridge Ski and Board Resort for our start/finish.

Address: Mission Ridge Ski & Board Resort, 7500 Mission Ridge Rd, Wenatchee, WA 98801

The actual course distances for the 50-mile and 100-mile events are approximately 52 and 104 miles, respectively. But anticipate GPS variability on your devices. It's trail running, after all.

All distances will start with a climb up through the forest from the base area of Mission Ridge Ski & Board Resort. At the Beehive Aid Station, the half-marathon course will begin a fun descent down to meet the Mission Creek Trail and head back to the finish line at the ski area.

The 50-mile and 100-mile runners will continue climbing up towards Tronsen Ridge. Runners then leave the 4x4 road and climb to the summit of Mission Peak. Take in the views of Mt. Rainier, Adams, and Mt. Stuart before backtracking to the road and continuing up towards Mt. Lillian.

We know your head will be down and your quads will be hard at work, but we recommend you take a moment to pause and look up occasionally, because the views and the geology, including the iconic rock features seen on the Devil's Gulch logo, are magnificent!

The 100-mile and 50-mile courses diverge at Mt. Lillian Aid Station. The 50-mile will continue down Tronsen Ridge, while the 100-milers will descend towards Blewett Pass for a technical 8-mile lollipop in an old burn. This area, while feeling remote, will feature rocky sections but also beautiful meadows and wildflowers. The loop will bring you back to Mt. Lillian Aid Station, where the 100-mile course rejoins the 50-mile on Tronsen Ridge. After the Tronsen Aid Station, both distances climb up and over Red Hill before descending rolling trails to the Sand Creek Aid Station.

| Course Stats | |
|--------------------------------|---|
| Elevation Gain | 50-mile: 11,000+ft 100-mile: 20,000+ ft |
| High Point | 6,828 ft |
| Low Point | 1,638 ft |
| Full Aid Stations | 50-mile: 5 100-mile: 10 |
| Water Only Aid Stations | 50-mile: 1 100-mile: 3 |
| Surface | 82% singletrack trail 18% dirt/gravel road |



After Sand Creek Aid, racers will continue another 5 miles to Mission Creek Aid Station, and then the 50-mile and 100-mile part ways.

100-milers on the first lap and 50-milers: The first time through Mission Creek Aid, it won't be staffed: consider it a water drop. For the 100-milers on the second time through, the aid station will be staffed and cooking up your favorite hot ultra meal.

The 50-mile begins the smooth but steady climb (complete with many creek crossings to cool off on and enjoy) back to the Mission Ridge base area, while the 100-mile runners head towards Number 2 Canyon, with a midway break at the Peavine Water Drop. At Number 2 Canyon Aid Station, 100-mile runners can join their pacers for the first time, yay! You'll then climb up beautifully graded singletrack to the summit of Horse Lake Mountain. *If you're keeping a 17-20min/mile pace you just might catch the beautiful sunset over the enchantment plateau at the summit!* You'll then enjoy a flowing ridgeline descent, complete with fields of wildflowers, back to Number 2 Canyon Aid Station.

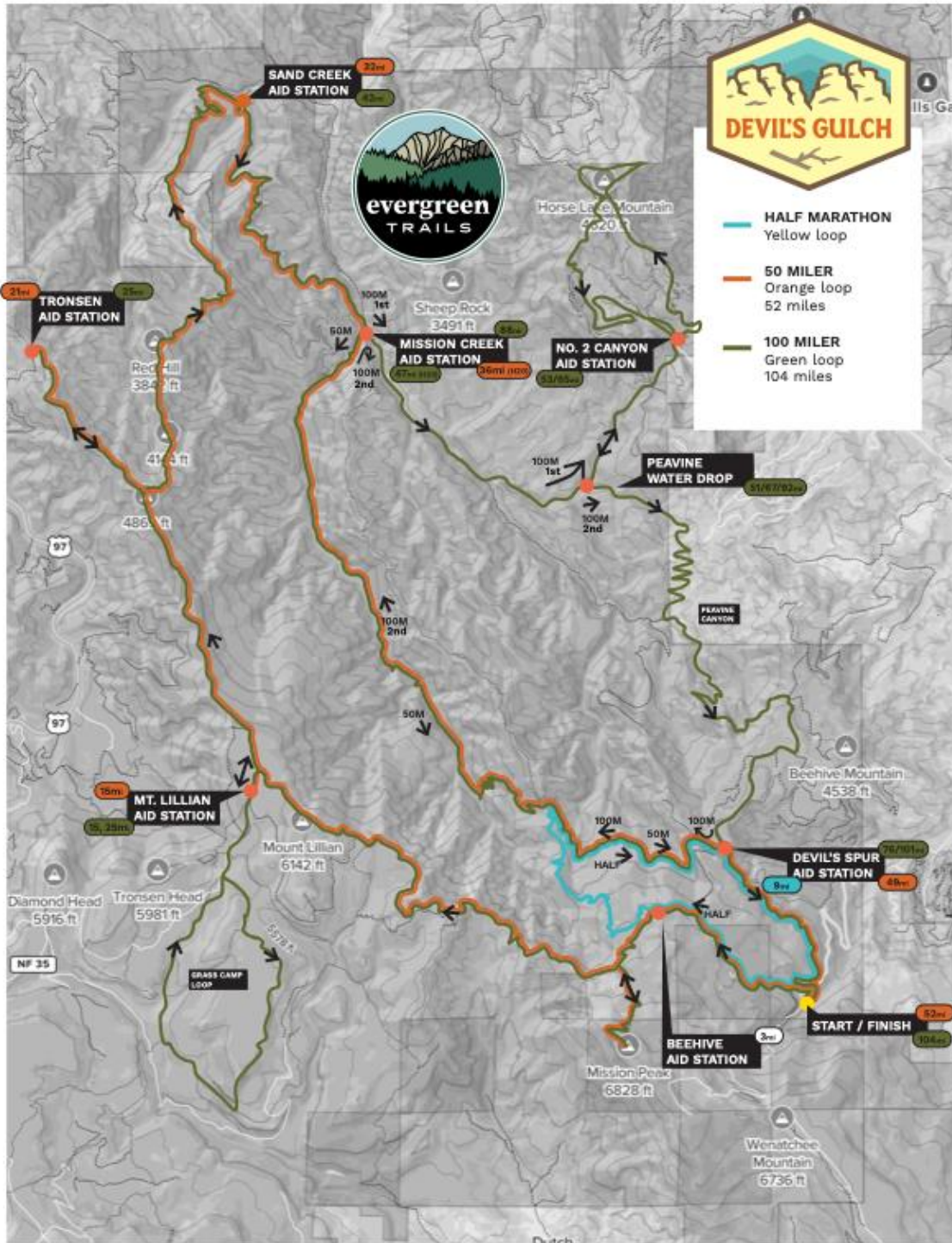
With the lollipop completed, the course returns to Peavine Canyon, where you'll climb back up and over towards the Devil's Spur Aid Station. After cresting the ridge, a dusty, switchbacking descent provides some nice rock feature views before another grueling climb finally brings you to the Devil's Spur Aid Station. From the aid station, you'll begin the welcome descent down Devil's Gulch trail and back to the Mission Creek Aid Station. Prepare to get wet feet as you will cross Mission Creek multiple times. After waving goodbye to the Mission Creek Aid Station, the course begins the final climb back up the Peavine Trail. This is the only section of trail you will repeat on the course, so if you missed those unique rock features in the dark, you'll get another shot for some cool geology. After finishing the climb and passing through Devil's Spur Aid Station again, you'll make your way along the finishing stretch, with a few miles of flat and descending trails back to the finish line, where well-earned post-race food and beverages will be awaiting.



Course Maps

[LINK TO CALTOPO MAP](#)

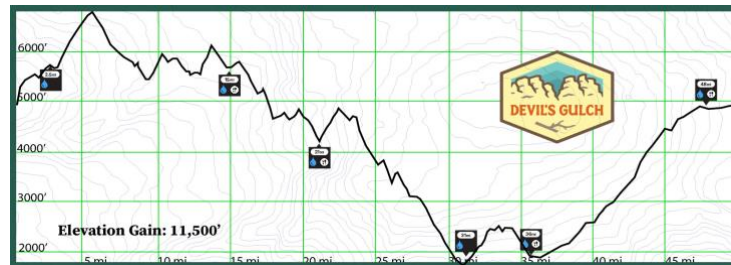
Please download the GPX file to your watch and/or phone



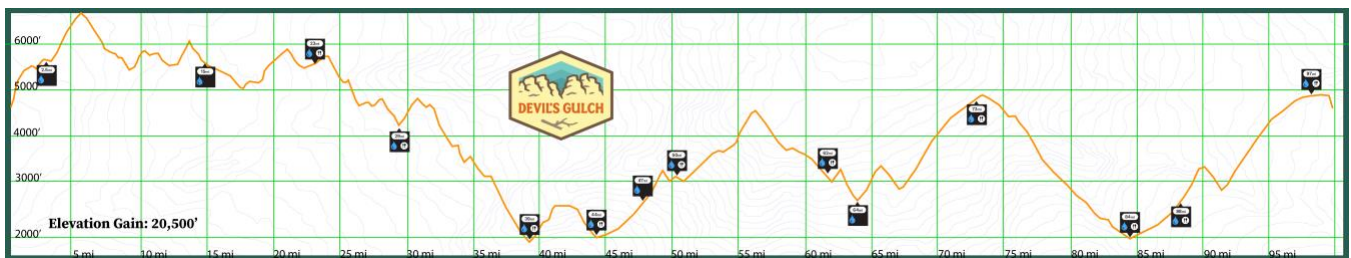


Elevation Profiles

50-mile



100-mile



Aid Stations

Our aid station volunteers are there to help get you what you need and encourage you to keep going! While your focus is grinding away on the course, we'll make sure to have our aid stations well stocked with plenty of snacks, electrolyte options, and hot food options. We don't suggest attempting to tackle an endurance run of this caliber just fueling on gels and chips, so each aid station will have hearty yet stomach-friendly options to keep you going strong.

Aid stations will be well stocked with an assortment of sweet and salty snacks. You will find PB&J sandwiches, pickles, M&M's, bars, gels, potato chips, Oreos, gummies, and fresh fruit. In addition to these typical aid station goodies, we will also have options such as quesadillas, soup, burritos, salted potatoes, pancakes, bacon, and other surprises. We'll have coffee for those overnight and morning hours as well. We try to accommodate a range of dietary needs, but if you have specific things you like, dislike, or simply cannot eat, you should plan accordingly (meaning, you may want to bring your own food). Don't expect to find everything at all the aid stations, but a mix of stuff along the way as well as some extra treats you didn't expect.

There will be plenty of water available, as well as pre-mixed Tailwind electrolyte beverage and salt tabs. We'll also provide a selection of fizzy sodas, including Coke and Ginger Ale. During the hottest points of the day, we will try to have ice on hand to pack into those vests!

This is a remote course, and distances between some full aid stations are up to 13 miles. All runners should carry and/or stock up on food, water, gels, and snacks before leaving each aid station. Runners are required to carry at least 2L of water carrying capacity for this event. Trust us, you'll want it all!



Aid Station Overview Tables

50-mile

| Aid Station | Mileage | Distance To Next Aid (miles) | Elevation Gain/Loss (ft) to Next Aid | Cut-off Time* | Drop Bags? | Crew Access? | Comments |
|-------------------------------|---------|------------------------------|--------------------------------------|--|------------|--------------|--|
| Start | 0 | 3 | +1400/-2500 | - | - | YES | |
| Beehive | 3 | 12 | +2900/-2950 | - | - | NO | |
| Mt. Lillian | 15 | 6 | +950/-2400 | - | NO | YES** | Rough road 1.5-hour drive from Start/Finish. |
| Tronsen Ridge | 21 | 11 | +2000/-4500 | - | NO | NO | |
| Sand Creek | 32 | 5 | +1850/-1750 | 8:00 PM (Sat) | YES | YES | 1 hour drive from Start/Finish. Past 6:30pm: Runners must leave with headlamp |
| Mission Creek (Water Only) | 37 | 12 | +4850/-1700 | - | NO | NO | |
| Devil's Spur | 49 | 3 | +415/-600 | - | NO | YES | 20min drive from Start/Finish. |
| Finish | 52 | - | - | Congratulations! Rest those weary feet! | | | |

*Cutoffs times are intentionally only at aid stations with the best crew access.

**Not recommended for Crew due to long drive times



100-mile

| Aid Station | Course Mileage | Distance To Next Aid (miles) | Elevation Gain/Loss (ft) to Next Aid | Cut-off Time* | Drop Bags? | Crew Access? | Comments |
|----------------------------|----------------|------------------------------|--------------------------------------|--|------------|--------------|---|
| Start | 0 | 3 | +1400/-250 | | | | |
| Beehive | 3 | 12 | +2900/-2950 | - | - | NO | - |
| Mt. Lillian | 15 | 9 | +1500/-1500 | - | YES | YES** | Rough road 1.5-hour drive from Start/Finish. |
| Mt. Lillian | 25 | 6 | +950/-2400 | - | YES | YES** | Rough road 1.5-hour drive from Start/Finish. |
| Tronson | 31 | 11 | +2000/-4500 | - | - | NO | - |
| Sand Creek | 42 | 5 | +1850/-1750 | 8:00 PM (Sat) | YES | YES | 1 hour drive from Start/Finish. Runners must leave with headlamp |
| Mission Creek (Water Only) | 47 | 4 | +900/-100 | - | NO | NO | |
| Peavine Water | 51 | 2 | +950/-350 | - | - | NO | - |
| Number 2 Canyon | 53 | 12 | +2800/-2800 | 12:30 AM (Sun) | YES | YES | 40-minute drive from Start/Finish. |
| Number 2 Canyon | 65 | 2 | +350/-950 | 5:00 AM (Sun) | YES | YES | 40-minute drive from Start/Finish. |
| Peavine Water | 67 | 9 | +3200/-950 | - | NO | NO | |
| Devil's Spur | 76 | 12 | +1700/-4800 | 9:00 AM (Sun) | YES | YES | 20min drive from Start/Finish. |
| Mission Creek | 88 | 4 | +900/-100 | 1:30 PM (Sun) | YES | YES | 1 hour drive from Start/Finish: see notes, as access is different from previous years |
| Peavine Water | 92 | 9 | +3200/-940 | - | - | NO | |
| Devil's Spur | 101 | 3 | +415/-600 | - | YES | YES | 20min drive from Start/Finish. |
| Finish | 104 | - | - | Congratulations! Rest those weary feet! | | | |

*Cutoffs times are intentionally only at aid stations with the best crew access.

**Not recommended for Crew due to long drive times



Aid Station Driving Directions

You must use the links and instructions below for driving directions, since doing your own search will likely leave you with “shorter” roads, yet they are not drivable. Google Maps will take you along roads impassable to most vehicles. YOU MUST GO THROUGH THE TOWN OF CASHMERE TO GET TO SAND CREEK AID STATION.

THERE IS NOT CELL COVERAGE THROUGH MANY OF THESE AREAS. DOWNLOAD THESE DIRECTIONS BEFORE THE RACE!

[Start/Finish to Mt. Lillian](#) : **YOU MUST GO TO BLEWETT PASS TO GET TO MT. LILLIAN AID STATION.**

[Start/Finish to Sand Creek](#) : **YOU MUST GO THROUGH CASHMERE TO GET TO SAND CREEK AID STATION- YOU CAN'T CUT THROUGH NUMBER 2 CANYON**

[Start/Finish to Devil's Spur](#)

[Start/Finish to Number 2 Canyon Aid Station](#)

[Sand Creek to Number 2 Canyon Aid Station:](#) **YOU MUST GO THROUGH CASHMERE TO TRAVEL BETWEEN SAND CREEK AID STATION AND NUMBER 2 CANYON.**

[Sand Creek to Devil's Spur:](#) **YOU MUST GO THROUGH CASHMERE TO TRAVEL BETWEEN SAND CREEK AID STATION AND DEVIL'S SPUR AID STATION.**

First Aid

First aid staff will be stationed at aid stations and at the race HQ. Medical personnel may recommend you be pulled from the course due to circumstances or illness that may result in serious injury or death. Please respect our medical staff, they are well trained and have your best interests at heart.

All aid stations will have robust resources for emergencies, cuts, bruises, and light foot-care products. We will also stock tampons, if they are needed. If you are prone to foot issues or chafing, please carry extra products to take care of problems that arise on the long stretches between aid stations.

If you have specific health needs, please let us know when you pick up your bib. You will be responsible for your own health needs and should plan ahead to carry what you may need. For example, if you are allergic to bees, you need to carry your own epinephrine on you, not in a drop bag that may be miles away. Additionally, please make sure to carry any prescription medication that you may need for the duration of the race. Again, the course is remote with limited cell coverage. It may take your crew, first responders, or race staff hours to reach you.



Drop Bags

Drop bags need to be pre-labeled with your NAME, BIB number, and aid-station DESTINATION. **DROP BAGS MUST BE DROPPED OFF ON FRIDAY DURING THE PRE-RACE MEETING.** Please keep drop bags small (less than 20L). We will have pre-labeled tarps near race HQ where you can set your drop-bags before the race. Drop bags will be returned to the Start/Finish at Mission Ridge as aid stations close. All drop bags will be returned by **8:30pm on Sunday**. If you drop from the race, it is your responsibility to pick up your drop bag. **We do not mail drop bags. 50-mile drop bags from Sand Creek will be picked up and returned to Mission Ridge by 9:00pm on Saturday night.** Place drop bags in the “used” bin at Sand Creek Aid Station if you would like the drop bag brought back to race HQ sooner, as we occasionally have staff or volunteers traveling between the two locations.

Drop Bag Locations/Mileages

| Drop Bag Aid Station | 100-Mile Drop Bags | 50-Mile Drop Bags |
|----------------------|--------------------|-------------------|
| Mt. Lillian | 15**, 25 | NO |
| Sand Creek | 42 | 31 |
| No. 2 Canyon | 53, 65 | NO |
| Mission Creek | 88 | NO |
| Devil’s Spur | 76, 101 | NO |

** Drop bags may not be available at mile 15 for fast 100mi runners.

Cutoff Times and Policy

We adhere to strict cutoffs for this race. Course cutoffs are in place for safety reasons and are required to maintain both our permitting and insurance. This is also out of respect for all the other runners, volunteers, and staff that make this race possible. Please pay attention to the cutoff times and respect the volunteers who must tell you the bad news should you not make a cutoff time. We understand how disappointing this can be after training so hard, but learning how to be a good sport about not meeting your own expectations is part of the journey of endurance running. **50-mile runners are held to the same cutoffs as the 100-mile runners. This means the only cut-off for 50mile runners is at Sand Creek (Mile 31) at 8:00pm on Saturday.**

Runners that are not leaving an aid station by the cutoff will be instructed to drop and get a ride back to the start/finish. If this is your first endurance run or you are unsure whether you will make these cutoffs, please plan to have crew support to get a ride back to the start/finish area at Mission Ridge. In an emergency or unique situation, we can arrange to pick up a stranded runner but be prepared to wait and hang out with the aid station volunteers for a while before we can get a staff member there.

Because of challenging forest roads and long drive times, we have specifically only set cutoffs at aid stations that have the best access. If you decide to drop out of the race at other aid stations that is 100% okay, just be prepared to handle your own transportation logistics.

| Aid Station | Mileage | Cut-off Time |
|-----------------|---------|--------------|
| Sand Creek | 42 | 8:00 PM |
| Number 2 Canyon | 53 | 12:30 AM |
| Number 2 Canyon | 65 | 5:00 AM |
| Devil’s Spur | 76 | 9:00 AM |
| Mission Creek | 88 | 1:30 PM |



Crew and Pacer Information

So, you've signed up to help your friend complete this race . . . now what!? While not essential for runners to complete the course, having a crew and/or pacer can be as important to a successful endurance run as hydration and fuel. Here is some important information to be a successful crew member or pacer for your runner. Remember your racers are probably going to be tired, burnt out, want to quit, just plain mean, or maybe trying to pet a racoon they think is a lost cat. It's your job to keep them grounded in reality, and on track to the finish line. You are simultaneously their entertainer, trainer, nutrition expert, friend, doctor, and voice of reason. Meanwhile, you and your runner should have a plan in place to determine when enough is enough and they need to reevaluate whether or not they should continue.

Crew

There is limited access along this course, so it's important to know where it is reasonable to ensure that you can get to an aid station in time to meet your runner. You don't want to be cutting it too close and miss them!!

The dirt roads are washboarded and in rough shape in many areas, plus you'll travel many miles on them before you reach some of the aid stations. So, while any mid-size vehicle would work, an SUV-type vehicle with some ground clearance will be best. Please do not speed on the dirt roads!!! With crews coming and going, narrow corners, and steep pitches, you do not want to get into an accident. The extra traffic on forest roads creates a lot of dust and overuse impacts road quality; please drive cautiously so the USFS continues to support and permit these events. If you have cars backed up behind you, pull aside if there is a wide enough space for you to safely do so, so that they can pass.

ALL AID STATION ACCESS REQUIRES YOU TO DRIVE BACK THROUGH WENATCHEE AND/OR HWY 2 AND HWY 97. DO NOT FOLLOW GOOGLE MAPS ROUTES THROUGH BACKCOUNTRY FOREST ROADS. THESE ROADS ARE IMPASSABLE.

| Aid Station | 100-mile Course Mileage | 50-mile Course Mileage | Drive time from Mission Ridge | Drive time from Mt. Lillian | Drive time from Sand Creek | Drive Time from Devil's Spur | Comments |
|-------------------------------|-------------------------|------------------------|-------------------------------|-----------------------------|----------------------------|------------------------------|---|
| Mt. Lillian | 15, 25 | 15 | 1.5 hours | - | 1.5 hours | 1hr 45 min | Rough road. SUV recommended |
| Sand Creek* | 42 | 32 | 1 hour | 1.5 hours | - | 1 hour | Limited parking, be considerate |
| Number 2 Canyon* | 53, 65 | - | 40 min | 1hr 40 min | 45 min | 40 min | Drive slowly to keep the dust down and respect local residents. |
| Devil's Spur* | 76, 101 | 49 | 20 min | 1hr 45 min | 1 hour | - | Drive slowly to keep the dust down. |
| Mission Ridge* (Start/Finish) | 0, 104 | 52 | - | 1.5 hours | 1 Hour | 20 min | |

*Preferred Crew Access

- Runners MAY NOT accept any aid or pick up a pacer outside of designated aid stations.
- All crew and pacers must adhere to race policies.
 - Violation of the above rules will result in the disqualification of your runner.



Pacers

Pacers are a great way to keep you going throughout your race! While not every runner wants a pacer, some runners find it an essential part of their endurance run experience. If this is your first 100-mile race or your first time pacing someone, there are a lot of good resources/blogs on the internet that can help set both you and your pacer up for success. Do your research and make sure to do some long practice runs with your pacer to make sure it's a good partnership. Some of our best friends may not be our best pacers.

Pacers are allowed for the 100-mile distance only and all pacers must check in at race HQ, sign our liability waiver, and pick up a pacer bib. Pacers are allowed to start at or after the [Number 2 Canyon Aid Station's](#) first stop.

Number 2 Aid Station is the ideal location to begin with a pacer if you'd like one for the whole second half of your run. Due to road closures, the only places to swap out pacers is [Number 2 Canyon Aid Station](#) at mile 63 and [Devil's Spur Aid Station](#) at mile 74.

**Pacers, study up on the course and pay attention to the course markings to help your runner!!

Pacer Rules

- ◇ Pacers must be on foot—no mountain bikes, electric bikes, or Back to the Future-inspired hoverboards.
- ◇ Only one pacer at a time per runner is allowed.
- ◇ Runners must carry their own gear and water. No mules!
- ◇ Pacers may partake in aid station fuels but be considerate of the racers and don't go all Cookie Monster on the aid station snacks.

Tips/Tricks for a Successful Run

This is a challenging and remote endurance run. You are expected to show up prepared and knowledgeable of the race rules and course route. Getting off route in the middle of the night could lead to a potentially dangerous and certainly unpleasant experience. You must pay attention to all course markings and be sure to pause and take a second look at all intersections, particularly when you're tired and slightly confused.

- ◇ Download the course GPX and study the intersections, elevation profiles, and distances between aid stations. [LINK TO CALTOPO](#)
- ◇ Course markings will consist of 8.5 x 11 inch laminated signs on colorful paper with a reflective strip plus arrows, event distance, and wrong ways at intersections. There is also reflective flagging about every ¼ mile along the route. Take note of what they look like during the light of day and focus at the bigger intersections to make sure you are going the correct direction.
- ◇ Take a photo of the course map or save the PDF to your phone.
- ◇ Cell coverage is limited; bring an InReach or emergency beacon in case you need immediate assistance and cannot continue to an aid station.
- ◇ Eastern Washington is hot during the day and could be cold at night in July. Come prepared with more water than you think you'll need and extra layers in your drop bag.
- ◇ Pests: mosquitoes, ticks, and bees are out there, so bring bug spray, antihistamines, and check yourself after the run.



- ◇ Wild animals including bears, cougars, wolves, and rattlesnakes all inhabit this area. Be thankful (but cautious) if you see one; it is an unlikely encounter and something very special. Wild animals are typically not aggressive and are just trying to avoid you. Simply make noise, look big, and DO NOT APPROACH OR PASS until they move along. If you are someone who is nervous about wild animals, carry bear spray. Despite its name it works on all types of wild animals.
- ◇ Bring sunscreen and/or sun protective clothing!! Many areas of the course have a lot of sun exposure.
- ◇ Take a dip in Mission Creek if you're hot. You'll cross it several times and it will help a lot!
- ◇ Consider using trekking poles. If they aren't already on your packing list, think about using them. It's a steep, technical course and they may be your savior on the steep ups and downs.

Required Gear

The following list of gear will be checked on race day. Runners missing any items will not be allowed to start the race.

- ◇ All 50 and 100-mile runners must carry 2L of water capacity with them.
- ◇ All runners must carry a way to purify water. Trust us, it might come in handy. We recommend filter flasks, but tablets work just as well.
- ◇ Headlamp:
 - 50-mile runners must have a headlamp available in their drop bag or with them. If you arrive at Sand Creek Aid (Mile 31) after 6:30pm you must carry the headlamp with you.
 - 100-mile runners must have a headlamp with you when you leave Sand Creek Aid at Mile 40.
- ◇ Warm Layers: 100-mile runners must have a long sleeve thermal shirt, but consider having pants, a hat, and gloves available in drop bags.
- ◇ All 50 and 100-mile runners must have a form of the course map, either on your phone/watch as GPX (highly recommended), printed version, or photo. **DOWNLOAD THE MAP TO YOUR PHONE OR WATCH BEFORE THE RACE AND BE SURE TO STUDY IT!** [LINK TO CALTOPO](#)

Race Policies and Disqualifications

You can refer to our website at www.evergreentrailruns.com/race-policies/ for a complete review of our policies for deferral, cancellations, transfers, or refunds. Please note, that Evergreen Trail Runs does not issue refunds for any reason.

You are responsible for following the course markings at all times. Any deviation from the course will result in a disqualification.

You and your crew must also follow all course rules and be respectful of other runners, volunteers, and race staff. Any disrespect or poor sportsmanship from you OR your crew towards other runners, race staff, or volunteers will be grounds for disqualification.

Runners who are not carrying any required gear will be disqualified.

Any runner not following leave no trace principals for trash or human waste will be disqualified. If you cannot make it to a restroom (we've all been there!), you are required to either dig a 6-inch "cathole" and bury your waste or carry it out "dog bag" style. All toilet paper must be carried out.



Swag!

All runners will receive a handmade finishers award commemorating this year's Devil's Gulch race and a t-shirt.

Now what I know you've been waiting for. . . the belt buckle! All 100-mile runners who complete the course will receive a Devil's Gulch belt buckle to show off to all your friends, even the ones who have no idea why anyone would choose to run 100 miles.

Awards

Overall winning times are based on gun time and winner categories are Male, Female, and Non-binary.

The top three finishers in each distance will receive a hand-crafted plaque.

Accommodations

There are lots of hotels and nightly rentals to choose from in Wenatchee, which is only a 20 minute drive away from Mission Ridge Ski Area, aka the Start/Finish area.

If you'd rather be as close as possible, camping at Mission Ridge Ski Area is available and booked through Mission Ridge Resort. It is parking lot camping, so vans, RVs, etc. are ideal. Those of you in tents should prepare to find ways to keep your tent staked down, as the stakes won't penetrate the packed surface.



Schedule

Friday, July 10th

Mandatory Pre-Race Meeting: 50 and 100-mile runners

Location: Mission Ridge Ski and Board Resort (Race Start/finish)

Address: [7500 Mission Ridge Rd, Wenatchee, WA 98801](#)

Date and Time: Friday, July 10th, 5-6pm

You must be at this mandatory meeting in order to participate in the event. This is when we will go over safety information, mandatory gear checks, and you'll drop your drop bags off. It is also a chance for you to ask any questions and mingle with other runners who might have sage advice from previous Devil's Gulch experiences.

Packet Pickup (Half Marathon Only!)

Location: Performance Footwear Wenatchee

Address: 24 S Wenatchee Ave, Wenatchee, WA 98801

Date and time: Friday, July 10th from 3:00 – 6:00PM

Perks: Devil's Gulch participants who come in to pick up their bibs will enjoy 15% off any in-store purchases

*If you can't make the Friday packet pickup, you can also pick up your bib beginning at 4:30am on race day, Saturday, July 11th.

Saturday, July 11th

Race Schedule

5:00am – 100 Mile Start

6:00am – 50 Mile Start

8:00am – Half-Marathon Start

Sunday July 12th

8:00pm: Course Close